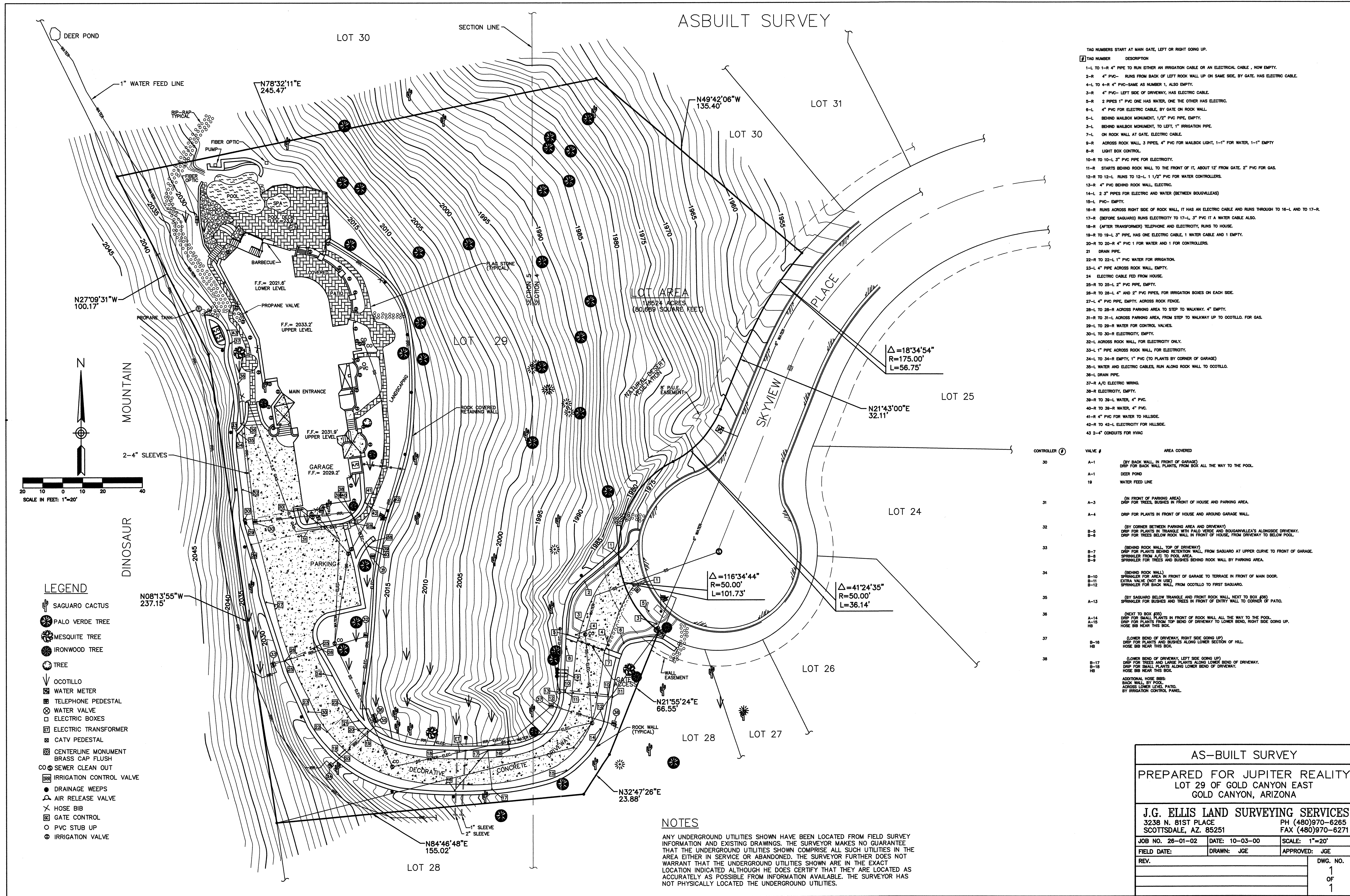


ASBUILT SURVEY



- TAG NUMBERS START AT MAIN GATE, LEFT OR RIGHT GOING UP.
- | TAG NUMBER | DESCRIPTION |
|------------|-----------------------------------------------------------------------------------------------------|
| 1-L | 1-R 4" PIPE TO RUN EITHER AN IRRIGATION CABLE OR AN ELECTRICAL CABLE. NOW EMPTY. |
| 2-R | 4" PVC- RUNS FROM BACK OF LEFT ROCK WALL UP ON SAME SIDE, BY GATE. HAS ELECTRIC CABLE. |
| 4-L | 4-R 4" PVC-SAME AS NUMBER 1, ALSO EMPTY. |
| 3-R | 4" PVC- LEFT SIDE OF DRIVEWAY, HAS ELECTRIC CABLE. |
| 5-R | 2 PIPES 1" PVC ONE HAS WATER, ONE THE OTHER HAS ELECTRIC. |
| 6-L | 4" PVC FOR ELECTRIC CABLE, BY GATE ON ROCK WALL. |
| 5-L | BEHIND MAILBOX MONUMENT, 1/2" PVC PIPE, EMPTY. |
| 3-L | BEHIND MAILBOX MONUMENT, TO LEFT, 1" IRRIGATION PIPE. |
| 7-L | ON ROCK WALL AT GATE, ELECTRIC CABLE. |
| 9-R | ACROSS ROCK WALL, 3 PIPES, 4" PVC FOR MAILBOX LIGHT, 1-1/2" FOR WATER, 1-1/2" EMPTY |
| 8-R | LIGHT BOX CONTROL. |
| 10-R | 10-L 3" PVC PIPE FOR ELECTRICITY. |
| 11-R | STARTS BEHIND ROCK WALL TO THE FRONT OF IT, ABOUT 12' FROM GATE. 2" PVC FOR GAS. |
| 12-R | 12-L RUNS TO 12-L 1 1/2" PVC FOR WATER CONTROLLERS. |
| 13-R | 4" PVC BEHIND ROCK WALL, ELECTRIC. |
| 14-L | 2 3" PIPES FOR ELECTRIC AND WATER (BETWEEN BOUVILLEAS) |
| 15-L | EMPTY. |
| 16-R | RUNS ACROSS RIGHT SIDE OF ROCK WALL, IT HAS AN ELECTRIC CABLE AND RUNS THROUGH TO 16-L AND TO 17-R. |
| 17-R | (BEFORE SAGUARO) RUNS ELECTRICITY TO 17-L, 3" PVC IT A WATER CABLE ALSO. |
| 18-R | (AFTER TRANSFORMER) TELEPHONE AND ELECTRICITY, RUNS TO HOUSE. |
| 19-R | 19-L 3" PIPE, HAS ONE ELECTRIC CABLE, 1 WATER CABLE AND 1 EMPTY. |
| 20-R | 20-R TO 20-R 4" PVC 1 FOR WATER AND 1 FOR CONTROLLERS. |
| 21 | DRAIN PIPE. |
| 22-R | 22-L 1" PVC WATER FOR IRRIGATION. |
| 23-L | 4" PIPE ACROSS ROCK WALL, EMPTY. |
| 24 | ELECTRIC CABLE FED FROM HOUSE. |
| 25-R | 25-L 2" PVC PIPE, EMPTY. |
| 26-R | 26-L 4" AND 2" PVC PIPES, FOR IRRIGATION BOXES ON EACH SIDE. |
| 27-L | 4" PVC PIPE, EMPTY, ACROSS ROCK FENCE. |
| 28-L | 28-R ACROSS PARKING AREA TO STEP TO WALKWAY, 4" EMPTY. |
| 31-R | 31-L ACROSS PARKING AREA, FROM STEP TO WALKWAY UP TO OCOTILLO, FOR GAS. |
| 29-L | 29-R WATER FOR CONTROL VALVES. |
| 30-L | 30-R ELECTRICITY, EMPTY. |
| 32-L | ACROSS ROCK WALL, FOR ELECTRICITY ONLY. |
| 33-L | 1" PIPE ACROSS ROCK WALL, FOR ELECTRICITY. |
| 34-L | TO 34-R EMPTY, 1" PVC (TO PLANTS BY CORNER OF GARAGE) |
| 35-L | WATER AND ELECTRIC CABLES, RUN ALONG ROCK WALL TO OCOTILLO. |
| 36-L | DRAIN PIPE. |
| 37-R | A/C ELECTRIC WIRING. |
| 38-R | ELECTRICITY, EMPTY. |
| 39-R | TO 39-L WATER, 4" PVC. |
| 40-R | TO 38-R WATER, 4" PVC. |
| 41-R | 4" PVC FOR WATER TO HILLSIDE. |
| 42-R | TO 42-L ELECTRICITY FOR HILLSIDE. |
| 43 | 2-4" CONDUITS FOR HVAC |

CONTROLLER	VALVE #	AREA COVERED
30	A-1	(BY BACK WALL IN FRONT OF GARAGE) DRIP FOR BACK WALL PLANTS, FROM BOX ALL THE WAY TO THE POOL.
	A-1	DEER POND
	19	WATER FEED LINE
31	A-3	(IN FRONT OF PARKING AREA) DRIP FOR TREES, BUSHES IN FRONT OF HOUSE AND PARKING AREA.
	A-4	DRIP FOR PLANTS IN FRONT OF HOUSE AND AROUND GARAGE WALL.
32	B-5	(BY CORNER BETWEEN PARKING AREA AND DRIVEWAY) DRIP FOR PLANTS IN TRIANGLE WITH PALO VERDE AND BOUVILLEAS'S ALONGSIDE DRIVEWAY.
	B-6	DRIP FOR TREES BELOW ROCK WALL IN FRONT OF HOUSE, FROM DRIVEWAY TO BELOW POOL.
33	B-7	(BEHIND ROCK WALL, TOP OF DRIVEWAY) DRIP FOR PLANTS BEHIND RETENTION WALL, FROM SAGUARO AT UPPER CURVE TO FRONT OF GARAGE.
	B-8	SPRINKLER FROM A/C TO POOL AREA.
	B-9	SPRINKLER FOR TREES AND BUSHES BEHIND ROCK WALL BY PARKING AREA.
34	B-10	(BEHIND ROCK WALL) SPRINKLER FOR AREA IN FRONT OF GARAGE TO TERRACE IN FRONT OF MAIN DOOR.
	B-11	EXTRA VALVE (NOT IN USE)
	B-12	SPRINKLER FOR BACK WALL, FROM OCOTILLO TO FIRST SAGUARO.
35	A-13	(BY SAGUARO BELOW TRIANGLE AND FRONT ROCK WALL, NEXT TO BOX #30) SPRINKLER FOR BUSHES AND TREES IN FRONT OF ENTRY WALL TO CORNER OF PATIO.
	A-14	(NEXT TO BOX #30) DRIP FOR SMALL PLANTS IN FRONT OF ROCK WALL ALL THE WAY TO THE POOL.
36	A-15	DRIP FOR PLANTS FROM TOP BEND OF DRIVEWAY TO LOWER BEND, RIGHT SIDE GOING UP.
	HB	HOSE BIB NEAR THIS BOX.
37	B-16	(LOWER BEND OF DRIVEWAY, RIGHT SIDE GOING UP) DRIP FOR PLANTS AND BUSHES ALONG LOWER SECTION OF HILL.
	HB	HOSE BIB NEAR THIS BOX.
38	B-17	(LOWER BEND OF DRIVEWAY, LEFT SIDE GOING UP) DRIP FOR TREES AND LARGE PLANTS ALONG LOWER BEND OF DRIVEWAY.
	B-18	DRIP FOR SMALL PLANTS ALONG LOWER BEND OF DRIVEWAY.
	HB	HOSE BIB NEAR THIS BOX.

ADDITIONAL HOSE BIBS:
BACK WALL, BY POOL
ACROSS LOWER LEVEL PATIO
BY IRRIGATION CONTROL PANEL.

AS-BUILT SURVEY

PREPARED FOR JUPITER REALTY
LOT 29 OF GOLD CANYON EAST
GOLD CANYON, ARIZONA

J.G. ELLIS LAND SURVEYING SERVICES
3238 N. 81ST PLACE PH (480)970-6265
SCOTTSDALE, AZ. 85251 FAX (480)970-6271

JOB NO. 26-01-02	DATE: 10-03-00	SCALE: 1"=20'
FIELD DATE:	DRAWN: JGE	APPROVED: JGE
REV.		DWG. NO.
		1 OF 1

NOTES

ANY UNDERGROUND UTILITIES SHOWN HAVE BEEN LOCATED FROM FIELD SURVEY INFORMATION AND EXISTING DRAWINGS. THE SURVEYOR MAKES NO GUARANTEE THAT THE UNDERGROUND UTILITIES SHOWN COMPRISE ALL SUCH UTILITIES IN THE AREA EITHER IN SERVICE OR ABANDONED. THE SURVEYOR FURTHER DOES NOT WARRANT THAT THE UNDERGROUND UTILITIES SHOWN ARE IN THE EXACT LOCATION INDICATED ALTHOUGH HE DOES CERTIFY THAT THEY ARE LOCATED AS ACCURATELY AS POSSIBLE FROM INFORMATION AVAILABLE. THE SURVEYOR HAS NOT PHYSICALLY LOCATED THE UNDERGROUND UTILITIES.